



Table of contents

1	Your mobile	4
1.1	Keys and connectors.....	4
1.2	Getting started.....	7
1.3	Home screen	8
2	Text input	16
2.1	Using the Onscreen Keyboard	16
2.2	Text editing	17
3	Phone call, Call log and Contacts	18
3.1	Phone	18
3.2	Contacts	24
4	Messages	28
4.1	Writing a new message	28
4.2	Manage messages.....	29
5	Camera	30
6	Gmail	33
7	Calendar & Alarm clock	39
7.1	Calendar	39
7.2	Clock	40
8	Getting connected	42
8.1	Connecting to the Internet.....	42
8.2	Connecting to Bluetooth devices	43
8.3	Connecting to a computer.....	45
8.4	Sharing your phone's mobile data connection.....	45
8.5	Connecting to virtual private networks.....	46
9	Google applications	48
10	Settings	50
10.1	Wi-Fi.....	50
10.2	Bluetooth	50

10.3	Mobile network.....	50
10.4	Connections.....	50
10.5	Home screen & lock screen	52
10.6	Display.....	52
10.7	NXTVISION	52
10.8	Sound & vibration	53
10.9	Notifications.....	53
10.10	Buttons & Gestures	53
10.11	Advanced features	53
10.12	Smart Manager	53
10.13	Security & biometrics.....	54
10.14	Location.....	54
10.15	Privacy.....	54
10.16	Safety & emergency.....	54
10.17	Apps	55
10.18	Storage.....	55
10.19	Accounts.....	55
10.20	Digital Wellbeing & parental controls.....	55
10.21	Google	55
10.22	Accessibility.....	55
10.23	System	56
11	FOTA Upgrade	57
12	Safety and use	58

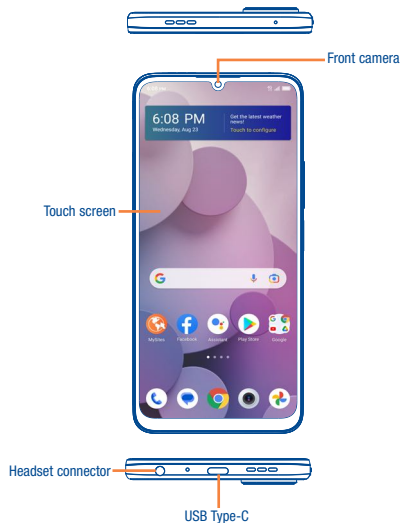
SAR

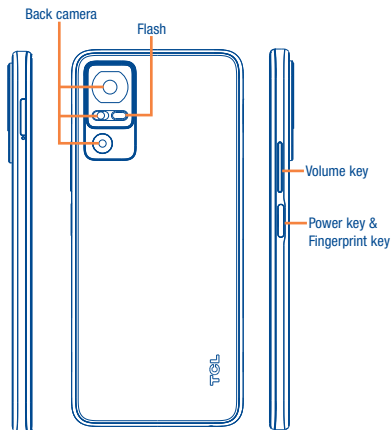
This product meets applicable national SAR limits of 1.6 W/kg. The specific maximum SAR values can be found in the “**SAR Information**” section.

When carrying the product or using it while worn on your body, either use an approved accessory such as a holster or otherwise maintain a distance of 15 mm from the body to ensure compliance with RF exposure requirements. Note that the product may be transmitting even if you are not making a phone call.

1 Your mobile

1.1 Keys and connectors





Back

- Tap to go back to the previous screen, or to close a dialog box, options menu, the notification panel, etc.

Home

- From any application or screen, tap to return to the Home screen.
- Touch and hold to activate Google Assistant.

Recent Apps

- Tap to open a thumbnail list of apps you've worked with recently. Tap a thumbnail to open an app. Swipe up on the screen to remove a specific thumbnail from the list or tap **CLEAR ALL** to remove all thumbnails from the list.

Power key

- Press: Lock the screen or light up the screen.
- Press and hold: Access Google Assistant
- Press and hold the **Power** key for more than 11 seconds to reboot.
- Press and hold the **Power** key and **Volume up** key at the same time to show the pop-up menu to select from **Power off**, **Restart** and **Airplane mode**.

Volume Keys

- During a call, adjusts the earpiece or headset volume.
- While listening to music, video or streaming, adjusts the media volume.
- Adjusts the ringtone volume.
- Mutes the ringtone of an incoming call.
- While using the camera, press **Volume up** or **down** key to take a photo.

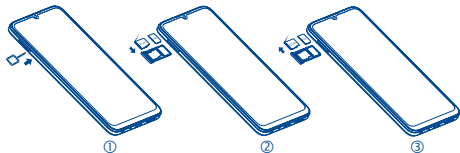
1.2 Getting started

1.2.1 Set up

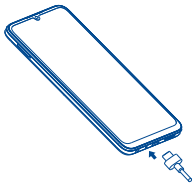
Installing or removing the SIM card and microSD™ card

Your phone already has a SIM card installed. If you need to change or remove your SIM card, follow the steps below.

- ① Use the provided SIM pin to open the SIM tray.
- ② To install SIM/microSD™ card, place the SIM/microSD™ card with the chip facing down into the SIM card tray and then slide it into its slot.
- ③ To remove SIM/microSD™ card, push up on the chip side of the cards inside the SIM tray.



Charging the battery



It is advised that you fully charge your battery before first use (100%). Connect the charger to your phone and an outlet. Charging status is indicated by the percentage on screen while the phone is powered off. The percentage increases as the phone is charged.



To reduce power consumption and energy waste when the battery is fully charged, disconnect your charger from your phone; switch off Wi-Fi, GPS, Bluetooth or background-running applications when not in use; reduce the backlight time, etc.

1.2.2 Power your phone on/off

To turn your phone on, press and hold the **Power/Lock** button until the screen turns on.

To turn your phone off, press both the **Power/Lock** button and **Volume up** button at the same time, then tap **Power off** on the screen when it appears.

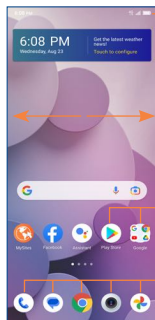
1.2.3 Set up your phone for the first time

The first time you power on the phone, you'll be prompted to choose your language, Vision settings, select a network, Date and time zone, log in to your Google Account and setup Google services. Finally, select a screen lock option such as fingerprint, face unlock, or Set a PIN, Pattern or Password. You may also skip this step and complete the setup at a later time.

Do not leave your PIN/password or pattern, with your phone. Store this information in a safe place when not in use.

1.3 Home screen

You can bring all of the items (applications, shortcuts, folders and widgets) you use most frequently to your Home screen for quick access. Tap the **Home** key to get instant access to the Home screen.



Status bar

- Status/notification indicators
- Drag down to open the Notification panel.

Tap an icon to open an application, folder, etc.

Favorite Applications tray

- Tap to open the application.
- Touch and hold to move or change applications.

The Home screen is provided in an extended format to allow more space for adding applications, shortcuts, etc. Slide the Home screen horizontally to get a complete view.

1.3.1 Using the touchscreen



Tap

To open an application, tap it with your finger.



Touch and Hold

Touch and hold the item to view options for the item, such as **Move**, **Remove**, and more.



Drag

Place your finger on the screen to drag an object to another location.



Slide/Swipe

Slide or swipe on the screen to scroll through the applications, images, web pages, and more.




Pinch/Spread

Place two fingers on the screen surface and draw them apart or together to scale an element on the screen.



Rotate

Automatically change the screen orientation from portrait to landscape by turning the device sideways to have a better view. **Auto-rotate** can be changed at any time in **Settings** .


1.3.2 Status bar

From the status bar, you can view both phone status and notification information.

Status icons

	GSM		Vibrate mode
	WCDMA		Alarm is set
	LTE		Connected to a Wi-Fi network
	Signal strength		Speakerphone is on
	No signal		No SIM card inserted
	Airplane mode		Battery is charging
	Bluetooth connected		Battery is low
	Headset connected		Battery is partially drained
	GPS is on		Battery is full

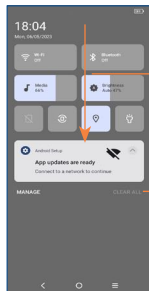
Notification icons

	New Gmail message		Missed call
	New text or multimedia message		Connect to open Wi-Fi network
	Upcoming event		Uploading data
	Downloading data		System update available

Drag down the Status bar to open the Quick Settings panel or Notification panel. Drag up to close the panels.

Notification panel

When there are notifications, drag down the Status bar to open the Notification panel to read the detailed information. Tap on the notification directly to open the notification within the respective app.



With the Notification panel open, drag down again to see the Quick Settings menu.

Tap to clear all event-based notifications (other ongoing notifications will remain).

Quick settings panel

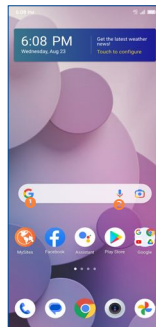
Drag down the Notification panel to open the Quick Settings panel, where you can enable or disable functions or change modes by tapping the icons.




Tap to open the full Settings menu.

1.3.3 Search bar


The phone provides a Search function which can be used to locate information within applications, the phone or the web.



1 Search by text

- Touch the Search bar from the Home screen.
- Type the text/phrase you want to search for.
- Touch the  icon on the keyboard if you want to search on the web.

2 Search by voice

- Touch  from the Search bar to display a dialog screen.
- Speak the word/phrase you want to search for. A list of search results will display for you to select from.

1.3.4 Lock/Unlock your screen

To protect your phone and privacy, you can lock the phone screen by creating a variety of patterns, PINs or passwords etc.

To lock the phone screen

- If your phone remains inactive for a period of time, it will automatically lock the screen and enter sleep mode to save power. Go to **Settings > Display > Sleep** and select a screen timeout period.
- You can also manually lock the screen by pressing the **Power** key once.

To unlock the phone screen

Press the **Power** key once to light up the screen, swipe up and unlock the screen with the method you have set.

- **Enter a password to unlock the screen**

Once the screen is turned on, swipe up from any position on the screen to display the password input panel. Then enter your lock screen password.

- **Use pattern unlock**

Draw the same pattern you have set to unlock the screen.

- **Use Face unlock**

From the app list, touch **Settings > Security & biometrics > Face unlock**. Before using the face unlock feature, you need to set a pattern/PIN/password.

Hold your phone 8-20 inches from your face. Position your face in the square shown on the screen. For best results, we suggest that the face key is enrolled indoors and away from direct sunlight.

1.3.5 Personalize your Home screen

Add

You can touch and hold a folder, an application or a widget to activate the Move mode and drag the item to any Home screen as you prefer.

Reposition

Touch and hold the item to be repositioned to activate the Move mode, drag the item to the desired position and then release. You can move items both on the Home screen and the favorite tray. Hold the icon on the left or right edge of the screen to drag the item to another Home screen.

Remove

Touch and hold the item to be removed to activate the Move mode, drag the item up to the top of the **Remove** icon, and release after the item turns white.

Create folders

To improve the organization of items (shortcuts or applications) on the Home screen and the favorite tray, you can add them to a folder by stacking one item on top of another. To rename a folder, open it and touch the folder's title bar to input the new name.

Wallpaper customization

Touch and hold the Home screen then touch **Wallpaper & style**  to customize wallpaper.

1.3.6 Widgets and recently used applications

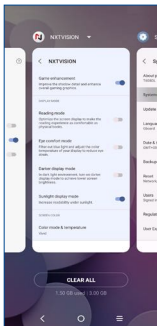
Consult widgets

Touch and hold the Home screen then touch **Widgets**  to enter widgets list.

To return to the Home screen, touch the **Home** button .

Consult recently used applications

To consult recently used applications, touch Recent APPs  from the Home screen. Touch a thumbnail in the window to open the related application.








Slide horizontally to view all thumbnails of recently used applications.

Touch one thumbnail and slide it up to remove it.

Touch **CLEAR ALL** to activate the system's one key boost which clears memory used by recent applications.

1.3.7 Volume adjustment

Using the Volume key

Press the Volume key and then touch  to adjust the volume. To activate the vibrate mode, press the Volume down or up key and touch , then touch . While in vibrate mode, press the Volume down or up key and touch , then touch  to activate the silent mode.

Using the Settings Menu

Swipe up on the Home screen, then touch **Settings**  > **Sound & vibration** to set the volume for ring, notification, media, alarm, etc. to your preference.

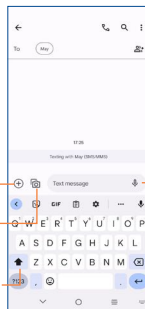
2 Text input

2.1 Using the Onscreen Keyboard

Onscreen keyboard settings

Swipe up on the Home screen, select **Settings**  > **System** > **Languages & input** > **Virtual Keyboard** and a series of settings will become available for your selection.

2.1.1 Gboard



Touch to choose Gallery, GIFs, Stickers, Files, Location, Contacts or Schedule Send.

Touch to enter voice input.

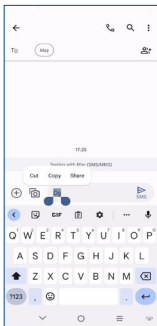
Touch to take a photo/video or attach a photo/video.

Touch to switch to "abc/Abc" mode;
Touch and hold to switch to "ABC" mode.

2.2 Text editing

You can edit the text you have entered.

- Touch and hold or double tap the text you would like to edit.
- The following options will show: **Cut, Copy, Share.**



You can also insert new text.

- Touch where you want to type, or touch and hold the blank area, the cursor will blink, and the tab will show. Drag the tab to move the cursor.
- If you have selected any text, touch the tab to show the **Paste** and **Select all** options which allows you to paste immediately.

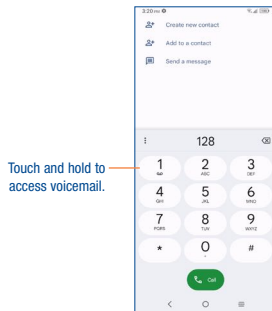
3 Phone call, Call log and Contacts

3.1 Phone



3.1.1 Placing a call

You can easily make a call using **Phone** . Touch **Phone**  from the Home screen.



Enter the desired number from the keyboard directly or select a contact from **Favorites, Contacts** or **Recents**, then touch  to place the call.

The number you entered can be saved to **Contacts** by touching  **Create new contact**.

If you make a mistake, you can delete the incorrect digits by touching .

To hang up a call, touch .

International call




To dial an international call, touch and hold  to enter "+", then enter the international country prefix followed by the full phone number and finally touch .

Emergency call

If your phone has network coverage, dial emergency number and touch  to make an emergency call. This works even without a SIM card and without typing the PIN code.

3.1.2 Answering or rejecting a call

When you receive a call:

- Swipe  up to answer.
- Swipe  down to reject.
- Touch  to reject the call by sending a preset message.

To mute the ringtone volume of an incoming call, press the **Volume up/down** key.

3.1.3 Calling your voicemail

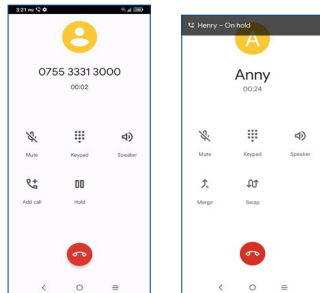
Your voicemail is provided by your network to avoid missing calls. It works like an answering machine that you can consult at any time.

To access your voicemail, touch and hold  on the dial pad.

To set your voicemail number, touch the **Menu** icon  from the Phone screen, then touch **Settings** > **Voicemail** > **Advanced Settings** > **Setup** > **Voicemail number**.

3.1.4 During a call

To adjust the volume during a call, press the **Volume up/down** key.



End the current call.

Touch to mute the current call. Touch this icon again to unmute the call.

Display the dial pad.

Touch to activate the speaker during the current call. Touch this icon again to deactivate the speaker.

Make another call.

Put a call on hold.

Merge calls to start a conference call.

Split a conference call into multiple calls.

Swap the calls.




To avoid accidental operation of the touchscreen during a call, the screen will be locked automatically when you put the cellphone close to your ear; and it will be unlocked when the cellphone is taken away from your ear.

3.1.5 Managing multiple calls


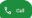


With this phone you can handle multiple calls at the same time.

Swap calls


When you accept two calls, touch the  icon to switch between two lines. The current call will be put on hold, and you are able to join the other call.

Conference calls⁽¹⁾

You can set up a conference call as follows.

- Place a call to the first participant of the conference call.
- Touch  to add another call.
- Enter the phone number of the person you want to add to the conference and touch . You can also add participants from **Call logs** or **Contacts**.
- Touch  to start the conference.
- Touch  to end the conference call and disconnect all callers.

3.1.6 Call settings

Touch the **Menu** icon  from the **Phone** screen, then touch **Settings**, the following options are available:

Caller ID & spam

Touch to enable the following functions:

- **See caller and spam ID**
Identify business and spam numbers.

Accessibility

Touch **Vibrate Reminder** to enable vibrate when outgoing calls connect successfully.

Assisted dialing

Touch to enable assisted dialing.

Note: Assisted dialing predicts and adds a country code when you call while traveling abroad.

Blocked numbers

Block the numbers you don't want to receive calls or texts from them.

Calls

Touch to enable vibrating mode for outgoing calls, forward your calls or access other voice call settings.

Display options

- **Sort by**
To set the contacts display by First name or Surname.
- **Name format**
To set the name format by First name first or Surname first.
- **Choose theme**
To set the theme you prefer.

Nearby places

Allow your device to use your location to find nearby places that match your query.

Quick responses

Touch to edit quick responses which will be used when you reject a call with messages.

Sounds and vibration

Adjust volume or select ringtone for your call, notification, alarm, etc.

Voicemail

Touch to access voicemail service and number settings.

- **Notifications**
Touch to select the notification sound.

⁽¹⁾ Depending on your network operator.

- **Advanced settings:**

- Caller ID announcement**

- Touch to enable your device to read out the caller's name and number when receiving incoming calls.

- Flip To Silence**

- Allow your device to silence an incoming call when you place it face down on a flat surface.

3.1.7 Call log

You can access your call log by touching  from the **Phone** screen to view missed calls, outgoing calls and incoming calls.

Touch one call to view information or further operations. You can launch a new call, send a message to the contact or number, or view detailed information of the call.

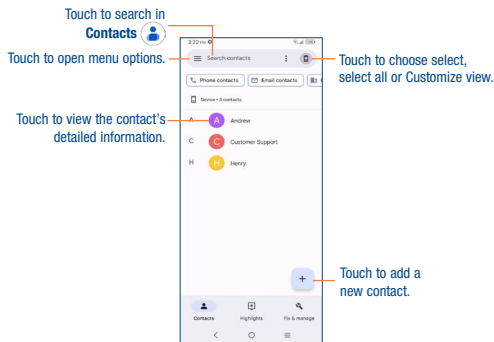
To delete the call history of a selected contact or number, touch and hold the contact and choose **Delete**.

3.2 Contacts

Contacts enables quick and easy access to the people you want to reach. You can view and create contacts on your phone.

3.2.1 Consult your Contacts

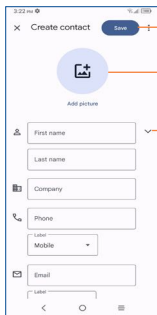
To access this feature, swipe up on the Home screen, then select **Contacts** .



3.2.2 Adding a contact

Touch  to create a new contact.

You are required to enter the contact's name and other contact information. By scrolling up and down on the screen, you can move from one field to another easily.



Touch to save

Touch to select a picture for the contact.

Touch to expand the label

Add to/remove from Favorites ⁽¹⁾

To add a contact to favorites, you can touch a contact to view details then touch  to add the contact to favorites (the star will turn white in color).

To remove a contact from favorites, touch  on the contact details screen.

3.2.3 Editing your contacts

To edit contact information, touch . When finished, touch **SAVE**.

Change a contact's default phone number

The default phone number (the number which has priority when making a call or sending a message) will always be displayed under the contact's name.

To change the default phone number, touch and hold the number you want to set as the default number from the contact's details screen, then select **Set default**.

⁽¹⁾ Only phone and account contacts can be added to Favorites.

This choice is only available when the contact has more than one number.

Set ringtone for a contact ⁽¹⁾

On the contact's detail screen, touch  to set ringtone.

Delete a contact

To delete a contact, touch and hold the contacts and then touch  to delete select contacts.

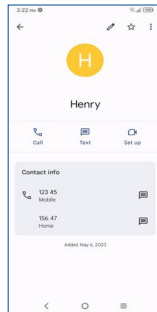


The contact you have deleted will also be removed from other applications on the phone or web the next time you synchronize your phone.

3.2.4 Communicating with your contacts

From the contact list, you can communicate with your contacts by making a call or exchanging messages.

Touch a contact to open Quick Contact for Android, then you can touch the number to make a phone call or  to send a message.



The icons available on the Quick Contact panel depend on the information you have for the contact and the applications and accounts on your phone.

⁽¹⁾ You can only set one ringtone for established contacts.

3.2.5 Contacts importing, exporting, and sharing

From the Contacts screen, touch **Fix & manage**, then select Import from file, Export to file or settings. Share a single contact or multiple contacts with others by sending the contact's vCard to them via Bluetooth, Gmail, etc.

Touch and hold the contact (s) you want to share, touch .

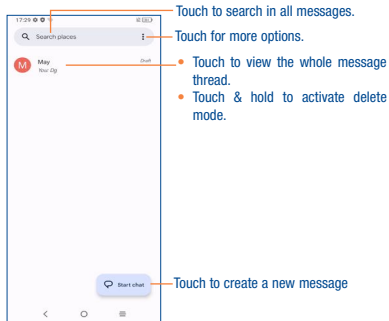
4 Messages

You can create, edit, and receive SMS and MMS with this phone.


To access this feature, touch **Messages**  from the Home screen.

4.1 Writing a new message

On the message list screen, touch the new message icon  to write text/multimedia messages.






Sending a text message

Enter the mobile phone number of the recipient in the **To** bar or select a contact, then touch the **Text message** bar to type the text of the message. When finished, touch  to send the text message.


Sending a multimedia message

MMS enables you to send video clips, images, photos, animations, slides and sounds to other compatible mobile devices and e-mail addresses.

An SMS will be converted to MMS automatically when media files (image, video, audio, slides, etc.) are attached or subject or email addresses are added.

- To send a multimedia message, enter the recipient's phone number in the **To** bar.
- Write the text of the message in the **Text message** bar.
- Touch  to choose Gallery, GIFs, Stickers, Files, Location, Contacts or Schedule Send.
- Touch  to take a photo/video or attach a photo/video you have taken.
- When finished, touch  to send the multimedia message.

4.2 Manage messages

When receiving a message, an icon  will appear on the status bar as notification. Drag down the status bar to open the Notification panel, touch the new message to open and read it. You can also access the Messaging application and touch the message to open.

Messages are displayed in conversational order.

To reply to a message, touch the current message to enter message composing screen, enter the text, then touch .

Long press an SMS on the message list screen. The following message options are available for selection:

Pin the selected messages.

Archive the selected messages.

Delete the selected messages.

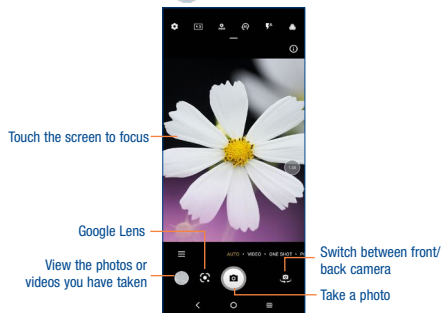
To block calls or texts from the contact. The selected conversation will be removed to "Spam & blocked".

5 Camera

Your mobile phone is equipped with a camera and a camcorder for taking photos and shooting videos.

Before using the camera or camcorder, please be sure to remove the protective lens cover before use to avoid it affecting your picture quality.



To access this function, touch **Camera**  from the Home screen.



To take a picture


The screen acts as the viewfinder. First position the object or landscape in the viewfinder, touch  to take the picture which will be automatically saved, touch and hold to take burst shots.

To take a video

Touch **VIDEO** to change the camera mode to video, then touch  to start video recording. You can also touch the left part of the icon  to take a picture during video recording.

Touch  to pause video recording and touch  to continue. Touch  to stop recording. The video will be automatically saved.

Further operations when viewing a picture/video you have taken

- Slide left or right to view the photos or videos you have taken.
- Touch  then select **Gmail/Bluetooth/Messages/etc.** to share the photo or video.
- Touch **Back** button to return to Camera.

Modes

Slide left or right to switch between modes.

- **AUTO:** Auto is the default mode for Camera.
- **VIDEO:** Touch to access video mode.
- **PORTRAIT:** Touch to create a depth of field effect. You can compose an image that highlights your subject while producing a gorgeously blurred background.
- **PRO:** Pro camera mode lets you fine-tune parameters and gives you full control over ISO, WB exposure time, aperture, shutter speed and so on.
- **PANO:** Use pano to capture a panoramic photo, an image with a horizontally elongated field of view. Tap the shutter button and move the phone steadily along in the direction indicated on the screen. The photo will be saved when all the slots are filled, or when pressing the shutter button again.

Touch  to access more modes. These modes can be moved to the main screen by touching .


- **STOP MOTION:** Capture a number of photos of a certain scene, then convert them into a speeded-up video.
- **LIGHT TRACE:** Capture creative movements of light using a long exposure photograph.
- **MOVIE VIDEO:** Tap to take a video with movie special effect.
- **SUPER MACRO:** Tap to access super macro mode. 4cm is the best macro shooting distance.
- **PORTRAIT:** Touch to create a depth of field effect. You can compose an image that highlights your subject while producing a gorgeously blurred background.
- **PRO:** Pro camera mode lets you fine-tune parameters and gives you full control over ISO, WB exposure time, aperture, shutter speed and so on.
- **PANO:** Touch to turn on the panorama function. Touch the shutter button to start taking a panoramic photo and move the phone steadily along in the direction indicated by the onscreen line. Once the slots are filled, the photo will be automatically saved. If the slots are not fully filled, touch the shutter button again to save the photo.

Settings

Touch  to set more options:

- **Volume button function:** Touch to customize the Volume button to Shutter, Zoom or Volume when using camera.
- **Storage:** Touch to choose between phone and microSD™ card storage when an microSD™ card is inserted. The default is phone storage.
- **Save location information:** Tap the switch to activate/deactivate the function of tagging photos and videos with your location. This option is available when GPS location services and wireless network are enabled and permission is granted.
- **Shutter sound:** Tap the switch to enable/disable shutter sound when taking a photo or video.
- **Watermark:** Tap to turn on/off Watermark
- **Reset settings:** Touch to reset the camera to its factory default settings.

More options are available when you switch to using the front camera:

- **Face Beauty:** Touch to turn on/off. When activated, touch  to adjust skin smoothing and enhance coloring effects in portraits.
- **Mirror camera:** Touch to turn on/off. It allows you to save selfies as previewed without flipping them.

6

Gmail



As Google's web-based email service, Gmail is configured when you first set up your phone. Gmail on your phone can be automatically synchronized with your Gmail account on the web. Unlike other types of email accounts, each message and its replies in Gmail are grouped in your inbox as a single conversation; all emails are organized by labels instead of folders.

To access Gmail

Swipe up on the Home screen, then touch **Gmail**.

To create and send emails

- Touch **Compose** icon from the Inbox screen.
- Enter recipient(s)'s email address in the **To** field, and if necessary, touch **+** and then add a copy or a blind copy to the message in the **Cc** or **Bcc** field.
- Enter the subject and the content of the message.
- Touch **+** to add an attachment.
- Finally, touch **➤** to send.
- If you do not want to send the email out right away, you can touch **⏸** and **Save draft** or touch **Back** button to save a copy. To view the draft, touch **⏸** display all labels, then select **Drafts**.
- If you do not want to send or save the email, you can touch **Discard** to discard.

To add a signature to emails, touch the **+** icon from the inbox screen and then touch **Settings**, choose an account, then touch **Mobile signature**.

To receive and read your emails

When a new email arrives, you will be notified by a ringtone or vibration, and  will appear on Status bar.

Touch and drag down the Status bar to display the Notification panel, touch the new email to view it. Or you can also access the Gmail Inbox label and touch All mail to read it.

You can search for an email by sender, subject, label, etc.

- Touch the Search mail bar from the Inbox screen.

- Touch **🔍** to say something or enter the keyword you want to search for in the searching box and touch **🔍**.

To reply or forward emails

• Reply

When viewing an email, touch **📧** to reply to the sender of this mail.

• Reply all

Touch **📧** and select "**Reply all**" to send message to all people in a mail loop.

• Forward

Touch **📧** and select "**Forward**" to forward the received mail to other people.

• Add star

Touch **★** to add star.

• Print

Touch **🖨** and select "**Print**" to save the email as PDF and print it.

Managing Emails with Labels

To conveniently manage conversations and messages, you can organize them using a Label.

To view conversations by labels when viewing your inbox or another conversation list, touch **🏷** to view a list of conversations with that label.

Touch and hold an email to activate batch mode and produce the following options:

📁 Touch to archive the email message.

🗑 Touch to delete the email message.

📖 / **📄** Touch to mark an email message as read or unread.

Touch **⋮** to show additional options:

• Move to

🏷 Touch to move the email to other labels.

• Snooze

🕒 Touch to set the notification of the email.

• Change labels

🏷 Touch to change the label of the email message or conversation.

- **Add star**
Touch to add star.
- **Mark important**
To Mark the email as important or not important.
- **Mute**
Touch to mute the email.
- **Print all**
Touch to save the email as PDF and print it.
- **Report spam**
To report the email message/conversation as spam.

Gmail settings

To manage Gmail settings, touch  from the inbox screen and then touch **Settings**.

General settings

- **Theme**
Touch to set theme for your email.
- **Default notification action**
Touch to set the default notification action when touched as Archive or Delete.
- **Manage notifications**
Touch to manage email notifications.
- **Conversation view**
Mark the checkbox to enable group emails in the same conversation together for IMAP, POP3, and Exchange accounts.
- **Conversation list density**
Touch to adjust conversation list density.
- **Hide bottom navigation on scroll**
Mark the checkbox to hide bottom navigation on scroll
- **Swipe actions**
Touch to select the swipe actions to archive in conversation list.

- **Default reply action**
Touch to choose the default reply action.
- **Auto-fit messages**
Touch to mark the checkbox to shrink messages to fit the screen and allow zooming.
- **Auto-advance**
Touch to select which screen to show after you delete or archive a conversation.
- **Open web links in Gmail**
When this setting is on, links will open in your Gmail app for faster browsing.
- **Confirm before deleting**
Mark the checkbox and you will need to confirm before deleting emails.
- **Confirm before archiving**
Mark the checkbox and you will need to confirm before archiving emails.
- **Confirm before sending**
Mark the checkbox and you will need to confirm before sending emails.

Touch an account and the following settings will display:

- **Account**
Touch to manage your Google Account.
- **Inbox type**
To set messages in this inbox as the default important first, Unread first, standard first or priority inbox.
- **Inbox categories**
Set the inbox category as Primary, Promotions or Social.
- **Notifications**
Select to activate notification when a new email arrives.
- **Inbox notifications**
Touch to set Play sound, Vibrate and Notify once when each new message arrives.
- **Manage labels**
Touch to open the Label screen, where you can manage synchronization and notifications.

- **Notification sounds**
Set notification sounds
- **Manage notifications**
Touch to manage email notifications.
- **Chat**
Mark the checkbox and the chat and spaces tabs would display in the email.
- **Default reply action**
Touch to set default reply action.
- **Mobile signature**
To add a signature text to the end of each mail you send.
- **Conversation view**
Mark the checkbox to enable group emails with same topic to gather together.
- **Smart features and personalization**
This function allows Gmail, Chat and Meet to personalize your experience and provide smart features with access to your email, chat and video contents.
- **Smart features and personalization in other Google products**
This function allows Google to personalize your experience and provide smart features with access to your email, chat and video contents.
- **Package tracking**
This function allows Google to track the status of your package and send the information to you by Gmail.
- **Smart Reply**
Mark the checkbox to enable the suggested replies shown when available.
- **Vacation responder**
Touch to set the notification when on vacation.
- **Show the Meet tab for video calling**
Touch to mark the checkbox and the Meet tab would be shown during video calling.
- **Send more diagnostic info**
This function allows Google to gather information from device for optimization.

- **Limited data usage**
Mark the checkbox to adjust call quality for saving data.
- **Leave empty calls (for Meet)**
This function will remove you from a call that no one else joins in within a few minutes.
- **Call ringing (for Meet)**
Set the ring for incoming call
- **Reply and follow up**
Touch to set the function of reply and follow-up per your preference.
- **Inbox Tips settings**
Touch to set inbox tips settings.
- **Sync Gmail**
Mark the checkbox to turn on/off Gmail sync.
- **Days of mail to sync**
Touch to set the duration of days for mail sync.
- **Download attachments**
Mark the checkbox to auto download attachments for recent messages via Wi-Fi.
- **Images**
Touch to set always show image or ask before showing.
- **Enable dynamic email**
Mark the checkbox to allow dynamic email displayed when available.

7 Calendar & Alarm clock

7.1 Calendar

Use Calendar to keep track of important meetings, appointments, etc.

To access this function, from Home screen, tap **Google**  > **Calendar**.

7.1.1 Multimode view


You can display the Calendar in daily, weekly, monthly, or agenda view.

To change your Calendar view, touch  to open a drop-down menu of **Day**, **3 days**, **Week** and **Month** for your options. Touch  to return to Today's view.

In **Schedule**, **Day** or **Week** view, touch an event to view its details. Touch a day in **Month** view to open that day's events.

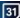
7.1.2 To create new events

You can add new events from any Calendar view.

- Touch  to access new event edit screen.
- Fill in all required information for this new event. If it is a whole-day event, you can turn on **All-day**.
- When finished, touch **Save** from the top of the screen.

To quickly create an event from **Day**, **Week** view screen, touch an empty spot or an event to open the event details screen of the time you have previously selected.

7.1.3 Event reminder

If a reminder is set for an event, the upcoming event icon  will appear on the Status bar as a notification when the reminder time arrives.

Touch and drag down the Status bar to open the notification panel, touch an event name to view the Calendar notification list. Touch the **Back** button to keep the reminders pending in the Status bar and the notification panel.





7.2 Clock

Your mobile phone has a built-in clock.

To view the current time, swipe up the Home screen, then touch **Clock**.

7.2.1 Alarm

From the Clock screen, touch **Alarm** to enter.

- Turn on  to enable the alarm.
- Touch  to add a new alarm, touch **OK** to save.
- Touch a currently existing alarm to enter the alarm editing screen.
- Touch **DELETE** to delete the selected alarm.

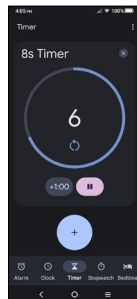
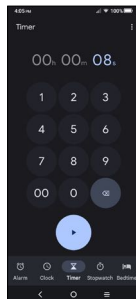
7.2.2 Clock




To view the date and time, touch **Clock**.

- Touch  to add a city from the list.

7.2.3 Timer

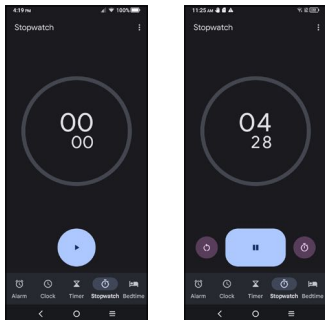
From the Clock screen, touch **Timer** to enter.






- Set the time. Touch  to start the countdown.
- Touch  to pause.
- Touch  to reset.

7.2.4 Stopwatch

From the Clock screen, touch **Stopwatch** to enter.



- Touch  to start the Stopwatch.
- Touch  to pause.
- Touch  to reset.

7.2.5 Bedtime

You can set a consistent bedtime for better sleep in this function.

7.2.6 Adjust Clock settings

Touch  to access Clock and Alarm settings.

8 Getting connected.....

To connect to the internet with this phone, you can use 4G network or Wi-Fi, whichever is more convenient.


8.1 Connecting to the Internet

8.1.1 4G

The first time you turn on your phone with network signal, it will automatically configure your network service: 4G ⁽¹⁾.

To activate/deactivate Data roaming



When roaming, you can decide to connect/disconnect to a data service.

- Swipe up on the Home screen.
- Touch **Settings**  > **Mobile network**.
- Select **Data roaming** to set roaming mode.
- When Data roaming is disabled, you can still perform data exchange with a Wi-Fi connection (refer to "8.1.2 Wi-Fi").

8.1.2 Wi-Fi

Using Wi-Fi, you can connect to the Internet when your phone is within the range of a wireless network. Wi-Fi can be used on your phone even without a SIM card inserted.

To turn Wi-Fi on and connect to a wireless network

- Swipe up on the Home screen, then touch **Settings**  > **Wi-Fi**.
- Touch the switch  to turn Wi-Fi on or off ⁽²⁾.
- Once Wi-Fi is turned on, detected Wi-Fi networks are listed.
- Touch a Wi-Fi network to connect. If the network you selected is secured, you are required to enter a password or other credentials (you may contact the network carrier for details). When finished, touch **CONNECT**.

⁽¹⁾ Depending on your network operator.

⁽²⁾ Wi-Fi is turned on by default when you power on the phone for the first time.


To activate notification when a new network is detected

When Wi-Fi is on and the network notification is activated, the Wi-Fi icon will appear on the status bar whenever the phone detects an available wireless network within range. The following steps activate the notification function when Wi-Fi is on:

- Swipe up on the Home screen and touch **Settings**  > **Wi-Fi** > **Wi-Fi preferences**.
- Mark/Unmark the **Open network notification** checkbox to activate/deactivate this function.

To add a Wi-Fi network

When Wi-Fi is on, you may add new Wi-Fi networks according to your preference.

- Swipe up on the Home screen and touch **Settings**  > **Wi-Fi** > **Add network**.
- Enter the name of the network and any required network information.
- Touch **CONNECT**.

You can also scan QR code to join Wi-Fi by touching  .

When successfully connected, your phone will be connected automatically the next time you are within the range of this network.


To forget a Wi-Fi network

The following steps prevent automatic connections to networks which you no longer wish to use.

- Turn on Wi-Fi, if it's not already on.
- On the Wi-Fi screen, touch the name of the saved network.
- Touch **Forget** in the dialog that opens.

8.2 Connecting to Bluetooth devices ⁽¹⁾

Bluetooth is a short-range wireless communication technology that you can use to exchange data or connect to other Bluetooth devices for various uses.

To access this function, swipe up on the Home screen, then touch **Settings**  > **Bluetooth** > **Pair new device**, your device and other available ones will show on the screen.


To turn on Bluetooth

- Swipe up on the Home screen, then touch **Settings**  > **Bluetooth**.


⁽¹⁾ You are recommended to use TCL Bluetooth headsets, which have been tested and proved compatible with this phone. You can go to tcl.com/us for more information about TCL Bluetooth headsets.

- Touch  to activate/deactivate this function.

To make your phone more recognizable, you can change your phone name which is visible to others.


- Swipe up on the Home screen.
- Touch **Settings**  > **Bluetooth**.
- Touch **Device name** and **Rename this device**.
- Enter a name, and touch **RENAME** to confirm.

To show received files

- Swipe up on the Home screen.
- Touch **Settings**  > **Bluetooth**.
- Touch **Received files** to view your transfer history.

To pair/connect your phone with a Bluetooth device

To exchange data with another device, you need to turn Bluetooth on and pair your phone with the Bluetooth device with which you want to exchange data.

- Swipe up on the Home screen.
- Touch **Settings**  > **Bluetooth** > **+ Pair new device**.
- Touch a Bluetooth device you want to be paired with on the list.
- A dialog will pop up, touch **PAIR** to confirm.
- If the pairing is successful, your phone will connect to the device.

To disconnect/unpair from a Bluetooth device

- Touch  next to the device name
- Touch  and **FORGET DEVICE** to confirm

8.3 Connecting to a computer

With the USB cable, you can transfer media files and other files between your microSD card/internal storage and the computer.

To connect/disconnect your phone to the computer:

To connect:

- Use the USB cable to connect the phone to a USB port on your computer. You will receive a notification that the USB is connected.
- Open the Notification panel and choose the way in which you want to transfer files. By default, **Charge this device** is selected.
- To disconnect your phone from the computer, unplug the USB cable from your computer's USB port.



Before using MTP, make sure that the driver (Windows Media Player 11 or higher version) has been installed.

To locate the data you have transferred or downloaded to internal storage, touch **Files**. All data you have downloaded is stored in **Files**, where you can view media files (videos, photos, music and others), rename files, install applications into your phone, etc.

8.4 Sharing your phone's mobile data connection

You can share your phone's mobile data connection with a single computer via USB cable (USB tethering) or with up to ten devices at once by turning your phone into a portable Wi-Fi hotspot.



The functions below may incur additional network charges from your network carrier. Extra fees may also be charged in roaming areas.

To share your phone's data connection via USB

Use a USB cable to connect the phone to a USB port on your computer.

- Touch **Settings** > **Connections** > **Hotspot & tethering**.
- Touch the switch next to **USB tethering** to activate/deactivate this function.

To share your phone's data connection as a portable Wi-Fi hotspot

- Touch **Settings** > **Connections** > **Hotspot & tethering**.
- Touch **Mobile hotspot** to activate/deactivate this function.

To share your phone's data connection via Bluetooth

- Touch **Settings** > **Connections** > **Hotspot & tethering**.
- Touch **Bluetooth tethering** to activate/deactivate this function.

To rename or secure your portable hotspot

When a Portable Wi-Fi hotspot is activated, you can change the name of your phone's Wi-Fi network (SSID) and secure its Wi-Fi network.

- Touch **Settings** > **Connections** > **Hotspot & tethering**.
- Touch **Mobile hotspot** to change the Hotspot name or set your network security.

8.5 Connecting to virtual private networks

Virtual private networks (VPNs) allow you to connect to the resources inside a secured local network from outside that network. VPNs are commonly deployed by corporations, schools, and other institutions so that their users can access local network resources when not inside that network, or when connected to a wireless network.

To add a VPN

- Swipe up on the Home screen.
- Touch **Settings** > **Connections** > **VPN** and then touch **+**.
- In the screen that opens, follow the instructions from your network administrator to configure each component of the VPN settings.
- Touch **SAVE**.

The VPN is added to the list on the VPN settings screen.

To connect/disconnect to a VPN

To connect to a VPN:

- Swipe up on the Home screen.
- Touch **Settings** > **Connections** > **VPN**.
- VPNs you have added are listed; touch the VPN you want to connect with.
- In the dialog that opens, enter any requested credentials and touch **CONNECT**.

To disconnect:

- Touch a connected VPN, then select **DISCONNECT**.

To edit/delete a VPN

To edit a VPN:

- Swipe up on the Home screen.
- Touch **Settings**  > **Connections** > **VPN**.
- VPNs you have added are listed; touch  next to the VPN you want to edit.
- When finished, touch **SAVE**.

To delete:

- Touch  next to the VPN
- Touch **FORGET** to delete

9 Google applications ⁽¹⁾

Google apps are preinstalled on your phone to improve work efficiency and help you enjoy life.

This manual briefly introduces the apps. For detailed features and user guides, refer to related websites or the introduction provided in the apps.

You are recommended to register with a Google Account to enjoy all of the functions.



Play Store

Serves as the official app store for the Android operating system, allowing users to browse and download applications and games. Applications are either free of charge or at a cost.

In the Play Store, search for the app you need, download it and then follow the installation guide to install the app. You can also uninstall, update an app, and manage your downloads.



Chrome

Using the Chrome browser, you can enjoy surfing the Web. Your bookmarks, browsing history, and settings across all devices with the browser installed can be synchronized with your Google Account.

To get onto the Web, go to the Home screen and touch the Chrome icon  in the Favorites tray.



Maps

Google Maps offers satellite imagery, street maps, 360° panoramic views of streets, real-time traffic conditions, and route planning for traveling by foot, car, or public transportation. By using this application, you can get your own location, search for a place, and get suggested route planning for your trips.

⁽¹⁾ Availability depends on phone variants.



YouTube

YouTube is an online video-sharing application where users can upload, view, and share videos. Available content includes video clips, TV clips, music videos, and other content such as video blogging, short original videos, and educational videos. It supports a streaming function that allows you to start watching videos almost as soon as they begin downloading from the Internet.



Drive

Google Drive is a file storage and synchronization service created by Google, which allows users to store files in cloud, share and edit files.

Files in Drive are well kept, and you can reach your files from any device by logging in to your Google Account. Files or folders can be shared privately with particular users that have a Google Account.



Google TV

Movies and television shows can be viewed online via Google TV. You can also download movies and TV shows for offline viewing. Some content is only available for rental or purchase.



Photos

Google Photos stores and backs up your photos and videos. It also automatically analyses photos and organizes them into groups, so that you can quickly locate the photo you need.



Assistant

Default mode is the same as launching the Google Assistant by long-pressing on the home button.



Files

Files displays all data stored on the phone, including both external SD card and internal storage, such as applications, media files downloaded from Google Play Store, YouTube or other locations; Videos, pictures or audios you have captured; other data transferred via Bluetooth, USB cable, etc.

10 Settings



To access this function, swipe up on the Home screen and then touch **Settings** 

You can also swipe down from the notification panel and touch 

10.1 Wi-Fi

Using Wi-Fi, you can now surf the Internet without using your SIM card whenever you are in the range of a wireless network. The only thing you have to do is to enter the **Wi-Fi** screen and configure an access point to connect your phone to the wireless network.

For detailed instructions on using Wi-Fi, please refer to section "**8.1.2 Wi-Fi**".

10.2 Bluetooth

For detailed instructions on using Bluetooth, please refer to section "**8.2 Connecting to Bluetooth devices**".

10.3 Mobile network

• Data roaming

If you don't need to transmit data on other provider's mobile networks, unmark the checkbox to avoid incurring significant roaming charges.

• Access Point Names

You can select your preferred network with this menu.

10.4 Connections

10.4.1 Airplane mode

Use **Airplane mode** to simultaneously disable all wireless connections including Wi-Fi, Bluetooth and more.

You can also open Airplane mode by touching **Airplane mode** on the Quick setting bar or in phone options when pressing Power key and volume up key at the same time.

10.4.2 Hotspot & tethering

This function allows you to share your phone's cellular data connection via USB or as a portable Wi-Fi access point (refer to "**8.4 Sharing your phone's mobile data connection**").

10.4.3 Data usage

Touch to view settings related to your data usage. Mark the checkbox to set cellular data limit. Your cellular data connection will be disabled when the specified limit is reached. You can also choose a data usage cycle to view the statistics and related applications of used data by your phone.



Data usage is measured by your phone, and your provider may count differently. Please consider using a conservative limit.

10.4.4 VPN

Virtual private networks (VPNs) allow you to connect to the resources inside a secured local network from outside that network. VPNs are commonly deployed by corporations, schools, and other institutions so that their users can access local network resources when not inside that network, or when connected to a wireless network. (refer to "**8.5 Connecting to virtual private networks**").

10.4.5 Private DNS

Touch to select the Private DNS Mode of the device.

10.4.6 Cast

You can use Cast to display your device's screen on your TV, and display content like TV shows, movies, photos, games, and websites from supported apps.

10.4.7 USB connection

With a USB cable, you can charge your device, transfer files or photos (PTP) between your phone and a computer.

To connect your phone to the computer

- Use the USB cable that came with your phone to connect the phone to a USB port on your computer. You will receive a notification that the USB is connected.
- Open the Notification panel and choose the way which you want to transfer files or touch **Settings > Connections > USB connection** to select. By default, **Charge this device** is selected.

10.4.8 Printing

Touch **Printing** to activate **Print services**. You can select your **Default print service**.

10.4.9 Chromebook

Link your phone to chromebook so that you can text from your computer, share your phone's Internet connection and simplify unlocking.

10.4.10 Nearby Share

Turn on Bluetooth or Wi-Fi to detect nearby devices.

10.4.11 Android Auto

Use apps on your car screen.

10.5 Home screen & lock screen

With this menu, choose your favorite wallpapers, set your Lock screen style, etc.

10.6 Display

In this menu, you can adjust your dark mode, status bar, font size, etc.

To rotate screen contents when device is rotated, touch **Auto-rotate screen**.

10.7 NXTVISION

• Image enhancement

Touch to enhance image contrast automatically, sharpness and dark details.

• Video enhancement

Touch to enhance the color, contrast and depth of detail of video to bring a cinema-grade visual experience

• Game enhancement

Touch to improve the shadow detail and enhance overall gaming graphics

• Reading mode

Touch to optimize the screen display to make the reading experience as comfortable as physical books.

• Eye comfort mode

Touch to filter out blue light and adjust the color temperature of your display to reduce eye strain.

- **Darker display mode**

Touch to turn on darker display mode to achieve lower screen brightness in dark light environment.

- **Sunlight display mode**

Touch to increase readability under sunlight.

- **Color mode & temperature**

With this menu, you can change display gamut based on display content like Vivid, Nature, etc.

10.8 Sound & vibration

Touch to adjust call and notification ringtones, music, and other audio settings.

10.9 Notifications

Touch to manage apps notification. You can set permission of apps notification, the authority to show the notifications on the lock screen, etc.

10.10 Buttons & Gestures

To set some buttons and gestures for convenient use, such as button layout, 3-finger screenshot, 3-finger regional screenshot, lift to wake, etc.

10.11 Advanced features

With this menu, you can set Smart App Recommend, Screen Recorder, etc.

10.12 Smart Manager

Smart Manager ensures your phone is operating in top form by automatically scanning and optimizing data usage to preserve battery levels, manage storage and protect against security threats.

Restricting auto-start apps can make the system run faster and extend battery life.

You can also update some options manually for further optimization.

10.13 Security & biometrics

- **Screen lock**

Select one method such as **Swipe, Pattern, PIN, Password** to unlock the screen.

- **Fingerprint**

Use your Fingerprint to unlock the screen.

Access **Settings > Security & biometrics > Fingerprint** to activate these functions.

- **Face unlock**

Face unlock allows you to unlock your device with your facial data. Set it according to the on-screen steps.

Ensure that you are facing the phone screen when using face recognition.

NOTE: you need to set a pattern, PIN, or password before using Face unlock.

- **Smart Lock**

Smart Lock keeps your device unlocked when it's safe with you and locked when it detects that it's been put down.

- **Others**

You can also set **Device admin apps, SIM card lock, Encryption & credentials, Trust agents, Screen pinning**, etc. under this menu.

10.14 Location

Tap to set whether to allow an app to access your device's location.

10.15 Privacy

To protect your privacy, you can set an app to be allowed or forbidden access to your location, SMS, phone, etc. Also, whether or not to show passwords, choose the activities and info that you want Google to save.

10.16 Safety & emergency

Access **Settings > Safety & emergency > OPEN PERSONAL SAFETY** to set medical information and emergency contacts.

Adding medical information and emergency contacts can help first responders in an emergency.

Anyone can read this information from your lock screen and dial your contacts by touching their names, without unlocking your phone.

You can also set **Emergency SOS**, **Emergency Location Service** or **Emergency alerts** in this interface.

10.17 Apps

Touch to view details about the applications installed on your phone, to manage their data usage or force them to stop.

In the **Permission manager** menu of an application, you can grant permissions for the app, such as allowing the app to access your **microphone**, **contacts**, **calendar**, etc.

10.18 Storage

Enter to check the usage of storage space and free up more when necessary.

10.19 Accounts

Touch to add, remove, and manage your email and other supported accounts. You can also use these settings to control how and whether all applications send, receive, and synchronize data on their own schedules, and whether all applications can synchronize user data automatically.

Touch **Add account** to add an account for the selected app.

10.20 Digital Wellbeing & parental controls

In this menu you can find how much time you have spent on the phone and even on each app. You can customize the time limit for using the phone to ensure a healthy and balanced life.

In addition, parents are able to restrict their children's usage time to manage their browsing habits.

10.21 Google

Touch to configure your Google Account and services settings.

10.22 Accessibility

Use the Accessibility settings to configure any accessibility plug-ins you have installed on your phone.

10.23 System

- **About phone**

View basic information for your phone such as model name, CPU, camera, Storage, etc.

You can also check legal information, build number, status and other specs.

- **System Update**

Touch to check for System updates.

- **Update APPS**

Check for apps update and keeps your apps up to date.

- **Languages & input**

Touch to configure language settings, virtual keyboard, secure input, physical keyboard, etc.

- **Date & time**

Use Date & time settings to customize your preferences for how date and time are displayed.

- **Backup**

Turn on to back up your phone's settings and other application data to Google servers. If you replace your phone, the settings and data you've backed up will be restored onto the new phone when you sign in with your Google Account.

- **Reset**

Tap to reset all network settings and app preferences, you won't lose your data with these settings.

If **Factory data reset** is selected, all data in your phone's internal storage will be erased, please back up your data before reset.

- **Users**


Share your phone by adding new users. Each user has a personal space on your phone for custom Home screens, accounts, apps, settings, and more.

- **Regulatory & safety**

Touch to view product information such as **Product model**, **Manufacturer name**, **IMEI**, **CU reference**, **Bluetooth Declaration ID**, etc.

11 FOTA Upgrade

Using the FOTA Upgrade tool you can update your phone's software.

To access **System update**, please Swipe up on the Home screen, then go to **Settings**  **> System > System Update**. Touch **CHECK FOR UPDATES**, and the phone will search for the latest software. The latest software will automatically download when the device is connected to a wireless network. After it is complete, please touch **Restart** to complete the upgrade. Now your phone will have the latest software version.

You should turn on data connection or connect through Wi-Fi before searching for updates.

12 Safety and use

Please read before using your phone

THE BATTERY IS NOT FULLY CHARGED WHEN YOU TAKE IT OUT OF THE BOX.

It is advised that you fully charge your battery before first use.

Privacy restrictions

Some countries require full disclosure of recorded telephone conversations and stipulate that you must inform the person with whom you are speaking that the conversation is being recorded. Always obey the relevant laws and regulations of your country when using the recording feature of your phone.

Disclaimers

ANY WEATHER, STOCK, OR OTHER INFORMATION, DATA, OR DOCUMENTATION ("ACCESSED INFORMATION") ARE PROVIDED "AS IS" AND WITHOUT ANY WARRANTY OR ANY TECHNICAL SUPPORT. TO THE MAXIMUM EXTENT PERMITTED BY APPLICABLE LAW, TCL MOBILE AND ITS AFFILIATES expressly disclaim any and all representations and warranties, arising by law or otherwise, related to the Accessed Information, including without limitation any express or implied representation or warranty of merchantability, fitness for a particular purpose, non-infringement, quality, accuracy, completeness, effectiveness, reliability, or usefulness. Without limiting the foregoing, it is further understood that TCL Mobile and its Affiliates are not responsible for any use of the Accessed Information or the results arising from such use, and that you use such information at your own risk.

Limitation of damages

TO THE MAXIMUM EXTENT PERMITTED BY APPLICABLE LAW, IN NO EVENT SHALL TCL MOBILE OR ITS AFFILIATES BE LIABLE TO YOU, ANY USER, OR THIRD PARTY FOR ANY INDIRECT, SPECIAL, CONSEQUENTIAL, INCIDENTAL OR PUNITIVE DAMAGES OF ANY KIND, ARISING IN CONTRACT, TORT, OR OTHERWISE, INCLUDING, BUT NOT LIMITED TO, INJURY, LOSS OF REVENUE, LOSS OF GOODWILL, LOSS OF BUSINESS OPPORTUNITY, LOSS OF DATA, AND/OR LOSS OF PROFITS, REGARDLESS OF THE FORESEEABILITY THEREOF OR WHETHER TCL MOBILE OR ITS AFFILIATES HAVE BEEN ADVISED OF THE POSSIBILITY OF SUCH DAMAGES. AND IN NO EVENT SHALL THE TOTAL LIABILITY OF TCL MOBILE OR ITS AFFILIATES EXCEED THE AMOUNT RECEIVED FROM YOU, REGARDLESS OF THE LEGAL THEORY UNDER WHICH THE CAUSE OF ACTION IS BROUGHT. THE FOREGOING DOES NOT AFFECT ANY STATUTORY RIGHTS WHICH MAY NOT BE DISCLAIMED.

Important health information and safety precautions

When using this product, the safety precautions below must be taken to avoid possible legal liabilities and damages.

Retain and follow all product safety and operating instructions. Observe all warnings in the operating instructions on the product.

To reduce the risk of bodily injury, electric shock, fire, and damage to the equipment, observe the following precautions.

WARNING: Cancer and Reproductive Harm - www.P65Warnings.ca.gov

Electrical safety

This product is intended for use when supplied with power from the designated battery or power supply unit. Other usage may be dangerous and will invalidate any approval given to this product.

Safety precautions for proper grounding installation

CAUTION: Connecting to improperly grounded equipment can result in an electric shock to your device.

Safety precautions for power supply unit

■ **Use the correct external power source**

A product should be operated only from the type of power source indicated on the electrical ratings label. If you are not sure of the type of power source required, consult your authorized service provider or local power company. For a product that operates from battery power or other sources, refer to the operating instructions that are included with the product. This product should be operated only with the following designated power supply unit(s).

Travel charger: Input: 100-240V,50/60Hz, 0.5A

Output: 5V 3A/9V 2A/12V 1.5A

■ **Take extra precautions**

- Do not attempt to open the back cover.
- Do not attempt to eject, replace, or open the battery.
- Do not puncture the back cover of your phone.
- Do not burn or dispose of your phone in household garbage or store it at temperature above 60°C (140°F).

Phone and battery as a unibody device must be disposed of in accordance with locally applicable environmental regulations.

This symbol on your phone, the battery, and the accessories mean that these products must be taken to collection points at the end of their life:

- Municipal waste disposal centers with specific bins for these types of equipment.
- Collection bins at points of sale.

They will then be recycled, preventing substances from being disposed of in the environment, so that their components can be reused.

Safety precautions for direct sunlight

Keep this product away from excessive moisture and extreme temperatures. Do not leave the product or its battery inside a vehicle or in places where the temperature may exceed 140°F (60°C), such as on a car dashboard, windowsill, or behind a glass that is exposed to direct sunlight or strong ultraviolet light for extended periods of time. This may damage the product, overheat the battery, or pose a risk to the vehicle.

PROTECT YOUR HEARING



To prevent possible hearing damage, do not listen at high volume levels for long periods. Exercise caution when holding your device near your ear while the loudspeaker is in use.

Safety in aircraft

Due to the possible interference caused by this product to an aircraft's navigation system and its communications network, using this device's phone function on board an airplane is against the law in most countries. If you want to use this device when on board an aircraft, remember to turn off your phone by switching to Airplane Mode.

Environment restrictions

Do not use this product in gas stations, fuel depots, chemical plants or where blasting operations are in progress, or in potentially explosive atmospheres such as fueling areas, fuel storehouses, below deck on boats, chemical plants, fuel or chemical transfer or storage facilities, and areas where the air contains chemicals or particles, such as grain, dust, or metal powders. Please be aware that sparks in such areas could cause an explosion or fire resulting in bodily injury or even death.

Explosive atmospheres

When in any area with a potentially explosive atmosphere or where flammable materials exist, the product should be turned off and the user should obey all signs and instructions. Sparks in such areas could cause an explosion or fire resulting in bodily injury or even death.

Users are advised not to use the equipment at refueling points such as service or gas stations and are reminded of the need to observe restrictions on the use of radio equipment in fuel depots, chemical plants, or where blasting operations are in progress. Areas with a potentially explosive atmosphere are often, but not always, clearly marked. These include fueling areas, below deck on boats, fuel or chemical transfer or storage facilities, and areas where the air contains chemicals or particles, such as grain, dust, or metal powders.

Road safety

Full attention must be given to driving at all times in order to reduce the risk of an accident. Using a phone while driving (even with a hands-free kit) may cause distraction and can lead to an accident. You must comply with local laws and regulations restricting the use of wireless devices while driving.

Safety precautions for RF exposure

- Avoid using your phone near metal structures (for example, the steel frame of a building).
- Avoid using your phone near strong electromagnetic sources, such as microwave ovens, sound speakers, TV and radio.
- Use only original manufacturer-approved accessories, or accessories that do not contain any metal.
- Use of non-original manufacturer-approved accessories may violate your local RF exposure guidelines and should be avoided.

Interference with medical equipment functions

This product may cause medical equipment to malfunction. The use of this device is forbidden in most hospitals and medical clinics.

If you use any other personal medical device, consult the manufacturer of your device to determine if they are adequately shielded from external RF energy. Your physician may be able to assist you in obtaining this information.

Turn your phone OFF in health care facilities when any regulations posted in these areas instruct you to do so. Hospitals or health care facilities may be using equipment that could be sensitive to external RF energy.

Nonionizing radiation

Your device has an internal antenna. This product should be operated in its normal-use position to ensure the radiative performance and safety of the interference. As with other mobile radio transmitting equipment, users are advised that for satisfactory operation of the equipment and for the safety of personnel, it is recommended that no part of the human body be allowed to come too close to the antenna during operation of the equipment.

Use only the supplied integral antenna. Use of unauthorized or modified antennas may impair call quality and damage the phone, causing loss of performance and SAR levels exceeding the recommended limits as well as result in non-compliance with local regulatory requirements in your country.

To assure optimal phone performance and ensure human exposure to RF energy is within the guidelines set forth in the relevant standards, always use your device only in its normal-use position. Contact with the antenna area may impair call quality and cause your device to operate at a higher power level than needed. Avoiding contact with the antenna area when the phone is IN USE optimizes the antenna performance and the battery life.

Electrical safety

■ Accessories

- Use only approved accessories.
- Do not connect with incompatible products or accessories.
- Take the necessary precautions not to touch or allow metal objects, such as coins or key rings, to contact or short circuit the battery terminals.

■ Connection to a car

- Seek professional advice when connecting a phone interface to the vehicle electrical system.

■ Faulty and damaged products

- Do not attempt to disassemble the phone or its accessory.
- Only qualified personnel must service or repair the phone or its accessory.

General precautions

You alone are responsible for how you use your phone and any consequences of its use. You must always switch off your phone wherever the use of a phone is prohibited. Use of your phone is subject to safety measures designed to protect users and their environment.

■ Avoid applying excessive pressure to the device

Do not apply excessive pressure on the screen and the device to prevent damaging them and remove the device from your pants' pocket before sitting down. It is also recommended that you store the device in a protective case and only use the device stylus or your finger when interacting with the touch screen. Cracked display screens due to improper handling are not covered by the warranty.

■ Device getting warm after prolonged use

When using your device for prolonged periods of time, such as when you're talking on the phone, charging the battery or browsing the Web, the device may become warm. In most cases, this condition is normal and therefore should not be interpreted as a problem with the device.

■ Heed service markings

Except as explained elsewhere in the Operating or Service documentation, do not service any product yourself. Service needed on components inside the device should be done by an authorized service technician or provider.

■ Protect your phone

- Always treat your phone and its accessories with care and keep them in a clean and dust-free place.
- Do not expose your phone or its accessories to open flames or lit tobacco products.
- Do not expose your phone or its accessories to liquid, moisture or high humidity.
- Do not drop, throw or try to bend your phone or its accessories.

- Do not use harsh chemicals, cleaning solvents, or aerosols to clean the device or its accessories.
- Do not paint your phone or its accessories
- Do not attempt to disassemble your phone or its accessories, only authorized personnel must do so.
- Do not expose your phone or its accessories to extreme temperatures, maximum 140°F (60°C).
- Please check local regulations for disposal of electronic products.
- Do not carry your phone in your back pocket as it could break when you sit down.

■ **Damage requiring service**

Unplug the product from the electrical outlet and refer servicing to an authorized service technician or provider under the following conditions:

- Liquid has been spilled or an object has fallen onto the product.
- The product has been exposed to rain or water.
- The product has been dropped or damaged.
- There are noticeable signs of overheating.
- The product does not operate normally when you follow the operating instructions.

■ **Avoid hot areas**

The product should be placed away from heat sources such as radiators, heat registers, stoves, or other products (including amplifiers) that produce heat.

■ **Avoid wet areas**

Never use the product in a wet location.

■ **Avoid using your device after a dramatic change in temperature**

When you move your device between environments with very different temperature and/or humidity ranges, condensation may form on or within the device. To avoid damaging the device, allow sufficient time for the moisture to evaporate before using the device.

NOTICE: When taking the device from low-temperature conditions into a warmer environment or from high-temperature conditions into a cooler environment, allow the device to acclimate to room temperature before turning on power.

■ **Avoid pushing objects into product**

Never push objects of any kind into cabinet slots or other openings in the product. Slots and openings are provided for ventilation. These openings must not be blocked or covered.

■ **Air bags**

Do not place a phone in the area over an air bag or in the air bag deployment area. Store the phone safely before driving your vehicle.

■ **Mounting accessories**

Do not use the product on an unstable table, cart, stand, tripod, or bracket. Any mounting of the product should follow the manufacturer's instructions and should use a mounting accessory recommended by the manufacturer.

■ **Avoid unstable mounting**

Do not place the product on an unstable base.

■ **Use product with approved equipment**

This product should be used only with personal computers and options identified as suitable for use with your equipment.

■ **Adjust the volume**

Turn down the volume before using headphones or other audio devices.

■ **Cleaning**

Unplug the product from the wall outlet before cleaning. Do not use liquid cleaners or aerosol cleaners. Use a damp cloth for cleaning, but NEVER use water to clean the LCD screen.

■ **Small children**

Do not leave your phone and its accessories within the reach of small children or allow them to play with it. They could hurt themselves or others or could accidentally damage the phone. Your phone contains small parts with sharp edges that may cause an injury, or which could become detached and create a choking hazard.

■ **Repetitive motion injuries**

To minimize the risk of RSI, when Texting or playing games with your phone:

- Do not grip the phone too tightly
- Press the buttons lightly
- Make use of the special features in the handset which minimize the number of buttons which must be pressed, such as message templates and predictive text.
- Take lots of breaks to stretch and relax.

■ **Operating machinery**

Full attention must be given to operating the machinery in order to reduce the risk of an accident.

■ **Loud noise**

This phone can produce loud noises which may damage your hearing.

■ **Emergency calls**

This phone, like any wireless phone, operates using radio signals, which cannot guarantee connection in all conditions. Therefore, you must never rely solely on any wireless phone for emergency communications.



Not all 911 emergency service providers can receive location information. Be prepared to report your precise location/address when calling 911. The device location cannot be identified in all circumstances.

Regulatory agency identifications

For regulatory identification purposes, your product is assigned a model number of T608DL. To ensure continued reliable and safe operation of your device, use only the accessories listed below with your T608DL device.

Operating temperature range: 32°F to 104°F (0°C to 40°C)

NOTE: This product is intended for use with a certified Class Limited Power Source, rated 4.35 Volts DC, maximum 1 Amp power supply unit.

Federal Communication Commission Interference Statement

This equipment has been tested and found to comply with the limits for a Class B digital device, pursuant to Part 15 of the FCC Rules. These limits are designed to provide reasonable protection against harmful interference in a residential installation. This equipment generates, uses and can radiate radio frequency energy and, if not installed and used in accordance with the instructions, may cause harmful interference to radio communications. However, there is no guarantee that interference will not occur in a particular installation. If this equipment does cause harmful interference to radio or television reception, which can be determined by turning the equipment off and on, the user is encouraged to try to correct the interference by one of the following measures:

- **Reorient or relocate the receiving antenna.**
- **Increase the separation between the equipment and receiver.**
- **Connect the equipment into an outlet on a circuit different from that to which the receiver is connected.**
- **Consult the dealer or an experienced radio or television technician for help.**

FCC Caution: Any changes or modifications not expressly approved by the party responsible for compliance could void the user's authority to operate this equipment.

This device complies with Part 15 of the FCC Rules. Operation is subject to the following two conditions: (1) This device may not cause harmful interference, and (2) this device must accept any interference received, including interference that may cause undesired operation.

Electronic labeling path: Touch **Settings > System > Regulatory & Safety** or press *#07#, you can find more information about labeling ⁽¹⁾, such as FCC ID.

⁽¹⁾ This may vary depending on country.

Important Note

Radiation Exposure Statement:

This equipment complies with FCC radiation exposure limits set forth for an uncontrolled environment. End users must follow the specific operating instructions for satisfying RF exposure compliance. To maintain compliance with FCC RF exposure compliance requirements, please follow operation instruction as documented in this manual.

This transmitter must not be co-located or operating in conjunction with any other antenna or transmitter, except the transmitters built-in with the device.

SAR Information

1.17 W/Kg @ 1g (HEAD)

1.39 W/Kg @ 1g (BODY)

THIS MODEL DEVICE MEETS THE GOVERNMENT'S REQUIREMENTS FOR EXPOSURE TO RADIO WAVES. For body worn operation, this phone has been tested and meets the FCC RF exposure guidelines when used with the TCL Mobile Limited. Accessories supplied or designated for this product. Use of other accessories may not ensure compliance with the FCC RF exposure guidelines.

Your wireless mobile phone is a radio transmitter and receiver. It is designed and manufactured not to exceed the emission limits for exposure to radio frequency (RF) energy set by the Federal Communications Commission of the U.S. Government. These limits are part of comprehensive guidelines and establish permitted levels of RF energy for the general population. The guidelines are based on the safety standards previously set by both U.S. and international standards bodies:

- American National Standards Institute (ANSI) IEEE. C95.1-1992.
- National Council on Radiation Protection and Measurement (NCRP). Report 86. 1986.
- International Commission on Non-Ionizing Radiation Protection (ICNIRP) 1996.
- Ministry of Health (Canada), Safety Code 6. The standards include a substantial safety margin designed to assure the safety of all persons, regardless of age and health.

The exposure standard for wireless mobile phone employs a unit of measurement known as the Specific Absorption Rate, or SAR. The SAR limit set by the FCC is 1.6 W/kg*.

The FCC has granted an Equipment Authorization for this model device with all reported SAR levels evaluated as in compliance with the FCC RF exposure guidelines. SAR information on this model device is on file with the FCC and can be found under the Display Grant section of <https://fjallfoss.fcc.gov/oetcf/eas/reports/GenericSearch.cfm> after searching on FCC ID: 2ACCJH170. Additional information on Specific Absorption Rates (SAR) can be found on the Cellular Telecommunications & Internet Association (CTIA) Website at <http://www.ctia.org/>.

* In the U.S. and Canada, the SAR limit for mobile phone used by the public is 1.6 Watts/kg (W/kg) averaged over one gram of tissue. The standard incorporates a substantial margin of safety to give additional protection for the public and to account for any variations in usage.

Normal condition only to ensure the radiative performance and safety of the interference. As with other mobile radio transmitting equipment, users are advised that for satisfactory operation of the equipment and for the safety of personnel, it is recommended that no part of the human body be allowed to come too close to the antenna during operation of the equipment.

Body-worn Operation

This device was tested for typical body-worn operations. To comply with RF exposure requirements, a minimum separation distance of 15 mm must be maintained between the user's body and the handset, including the antenna. Third-party belt-clips, holsters, and similar accessories used by this device should not contain any metallic components. Body-worn accessories that do not meet these requirements may not comply with RF exposure requirements and should be avoided.

Use only the supplied or an approved antenna. Unauthorized antennas, modifications, or attachments could impair call quality, damage the phone, or result in violation of regulations. Do not use the phone with a damaged antenna. If a damaged antenna comes into contact with the skin, a minor burn may result. Please contact your local dealer for replacement antenna.

FCC RF Radiation Exposure Statement

- This transmitter has been demonstrated co-location compliance requirements with Bluetooth® and WLAN. This transmitter must not be co-located or operating in conjunction with any other antenna or transmitter.
- This equipment complies with FCC RF radiation exposure limits set forth for an uncontrolled environment.

Telecommunications & Internet Association (TIA) safety information

Pacemakers

The Health Industry Manufacturers Association recommends that a minimum separation of 15 cm (6 inches) be maintained between a handheld wireless phone and a pacemaker to avoid potential interference with the pacemaker. These recommendations are consistent with the independent research by and recommendations of Wireless Technology Research.

Persons with pacemakers:

- Should ALWAYS keep the phone more than 15 cm (6 inches) from their pacemaker when the phone is turned ON.
- Should not carry the phone in a breast pocket.
- Should use the ear opposite the pacemaker to minimize the potential for interference. If you have any reason to suspect that interference is taking place, turn the phone OFF immediately.

Hearing aids

Some digital wireless phones may interfere with some hearing aids. In the event of such interference, you may want to consult your service provider, or call the customer service line to discuss alternatives.

RoHS compliance

This product is in compliance with Directive 2011/65/EU of the European Parliament and of the Council of 7 January 2003, on the restriction of the use of certain hazardous substances in electrical and electronic equipment (RoHS) and its amendments.

Electronic Recycling (Within USA Only):

For more information on Electronic Recycling, please visit the TCL Electronic Recycling Program at <https://www.tclusa.com/mobile/accessibility-compliance/electronic-recycling-program/>.

Battery Recycling (USA & Canada):

TCL partners with Call2Recycle® to offer a safe and convenient battery recycling program. For more information on our Battery Recycling Program, please visit the USA and Canada website at <https://www.tclusa.com/mobile/accessibility-compliance/battery-recycling/>.